

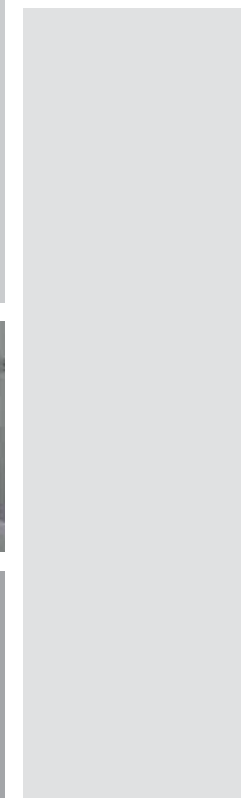
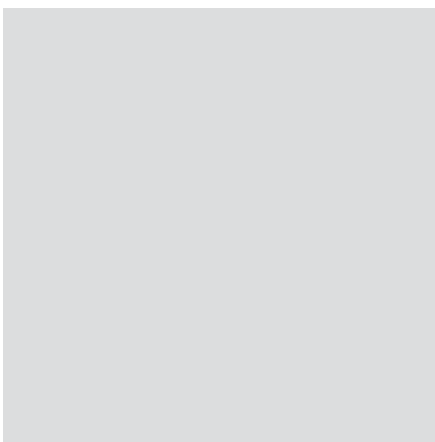


www.jozasstudio.com

**CONTACT DETAILS**

Quick Fit Frames & Doors Ltd,  
Unit C,  
Waterford Road Business Park,  
New Ross  
Co. Wexford,  
Ireland

Phone: 051 420154  
Fax: 051 445379  
Website: [www.quickfitdoors.ie](http://www.quickfitdoors.ie)  
Email: [info@quickfitdoors.ie](mailto:info@quickfitdoors.ie)



# Company Profile

Quick Fit Frames & Doors Ltd is the leading internal pre-hung door specialist in Ireland.

The Quick Fit pre-hung door unit was designed and patented in 1993 by Mr. Alfred Lambert, the company's managing director. Since then, the design of the unit has gone from strength to strength. Although it has been imitated by others in recent years, the same standard of excellence has yet to be achieved elsewhere.

Since 1994, Quick Fit Frames & Doors Ltd has been the most successful manufacturer of internal frame and door units in Ireland. Recent expansion became so dramatic that it necessitated a move to larger premises in August 2005. Quick Fit now operates from a 55,000ft<sup>2</sup> premises, with a state-of-the-art workshop equipped with new CNC machinery, capable of producing over 400 units per day.

The standard Quick Fit unit includes a door from our wide range available, fitted with a lock of your choice, hanging in a red deal frame on three lift-off hinges. The unit is delivered complete with architrave attached to both sides of the frame, and can be fitted on site by a carpenter in less than 15 minutes.

The Quick Fit fire-resistant unit has been assessed by an independent fire-assessment consultancy firm and has been fully certified. Quick Fit can supply either 30-minute or 60-minute fire-rated units; these are delivered with fire-tags attached to frames, and are accompanied by detailed fitting instructions. Full fire-certification is provided for all fire-resistant units supplied.

Quick Fit Frames & Doors Ltd sources most doors through our sister company BNS Doors Direct Ltd. One of BNS' suppliers is

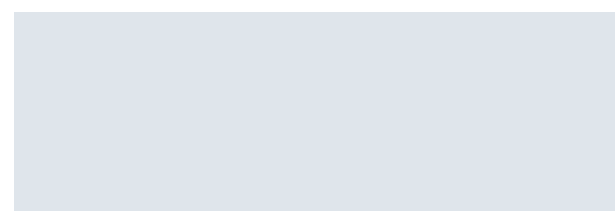
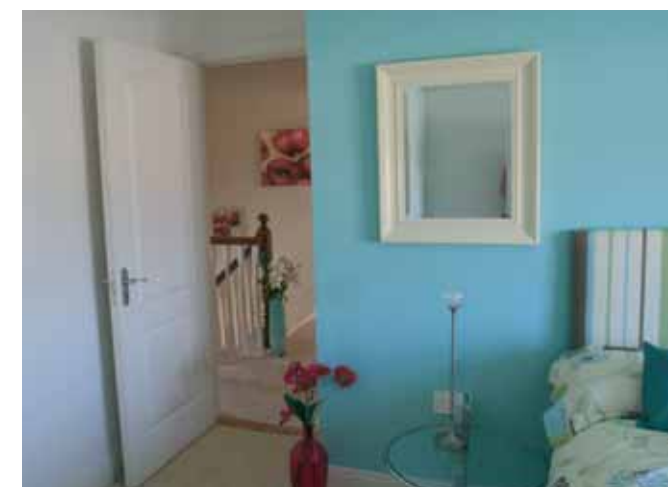
the Spanish company Puertas Norma, with whom Quick Fit also has close ties. We are proud to be the exclusive Irish distributor of the Puertas Norma pre-finished pre-hung door unit range. Puertas Norma is also expanding the company's product range and has recently moved to a larger premises in Spain. Their increased efficiency and manufacturing-capacity have resulted in shorter lead times for both doors and units, which Quick Fit is happy to pass on to you.

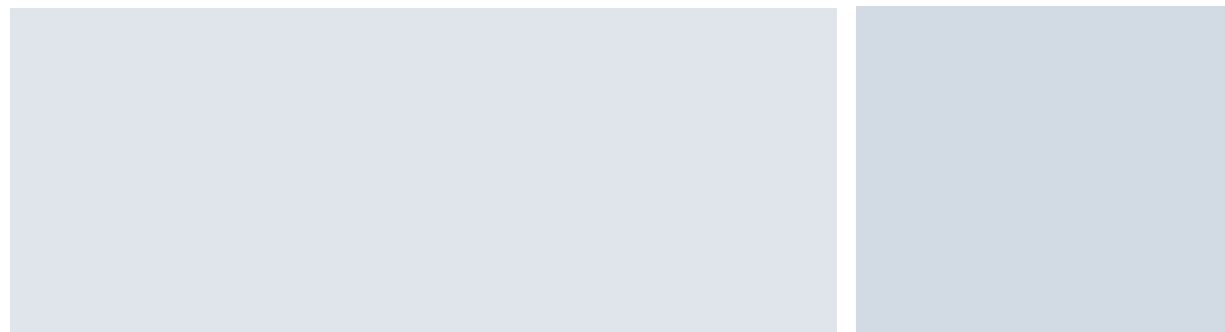
Samples of the Quick Fit and Puertas Norma units can be seen in the showroom of BNS Doors Direct Ltd, which is situated next to Quick Fit Frames & Doors Ltd in the Waterford Road Business Park, New Ross, Co. Wexford.

Quick Fit Frames and Doors Ltd strives to supply top-quality door units and provide a top-quality service to all our customers. All doors are available in a wide range of veneers; frames are available in paint-grade, solid-timber or veneered finishes. The choices available give the customer the opportunity to design a door unit to suit any environment.

We have supplied units to a diverse range of premises such as hotels, apartments, nursing homes, schools and housing developments. We invite you to take time to look the photographs in our brochure, where you can see examples of the developments that we have supplied and of how our products in situ can enhance an area. Our door units are more than just practical and functional; a Quick Fit or Puertas Norma door unit should be regarded as a piece of furniture that complements other furniture in a room.

Please forward any enquiries to [info@quickfitdoors.ie](mailto:info@quickfitdoors.ie) or call our office on 051-420154.







FAJ-2H



FAJ-2V



FAJ-2V GREC-2



MAPLE 1 INLAY



FAJ-2H



PANT 3



FAJ-2V GREC-2



ASH 1 PANEL INLAY



CHERRY 1 PANEL INLAY



OAK 1 PANEL INLAY



WHITE LACKERED



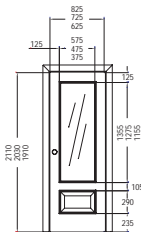
FLUSH OAK / CHERRY / ASH / BEECH ETIMOE



N-3 "R"



N-3 V "R"



N-73/32 V "R"



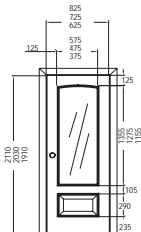
Vidriera J20  
J20 glazing



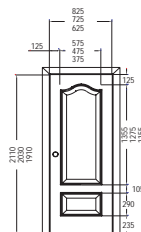
N-373 R



N-373 V "R"




N-73 R



Vidriera J20  
J20 Panels

Choice of veneers

-  Curupixa
-  Cherry
-  Etimoe
-  Steam Beech
-  Iroko
-  Maple
-  Anegre
-  American Walnut
-  Oak
-  Sapelly
-  Sapelly cut crow



24 4 PANEL GLASS TOP XXX



24 4 PANEL RAISED XXX



26 MONCAYO



27 GREDOS

### MOULDED PANEL DOORS

Our range of moulded panel doors consists of a range of classical designs. These door facings are manufactured from moulded wood fibre panels giving a one piece skin construction. Our moulded panel doors are available in normal smooth-skin finish and embossed, Woodgrain texture finish. All doors are base-coated as standard and can be decorated using normal painting methods.



6 PANEL (Smooth & Woodgrain)



2 PANELS (Woodgrain)



4 PANELS (Woodgrain)

### FIRE DOORS

30-minute fire rated doors (FD30) are available in both smooth and woodgrain finish ex-stock.

60-minute fire rated doors (FD60) are available on special order at short lead times.

**MOBILITY** Extra wide doors (2032 x 864mm / 6'8" x 2'10") are available for mobility access doors are available in both smooth and woodgrain finish.

### CLEAR ENGINEERED PINE DOORS

Our Clear Engineered Pine doors are manufactured using dowel joints with solid laminated stiles over-veneered with Clear Elliotis Pine Clear Engineered Pine doors have no knots are available ex-stock in the following formats.

All doors are supplied unvarnished and unglazed.



6 PANEL



RICHMOND STRAIGH TOP

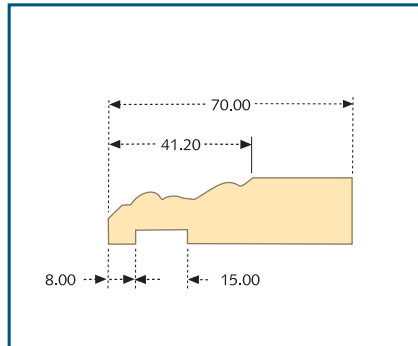


CLIFTON ARCH TOP

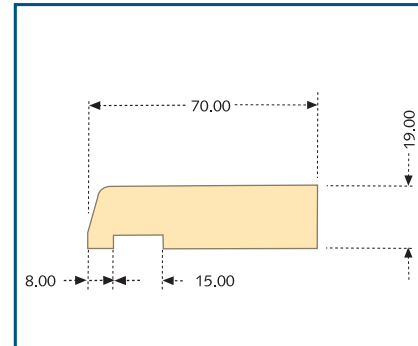


STANDARD ARCHITRAVE PROFILES

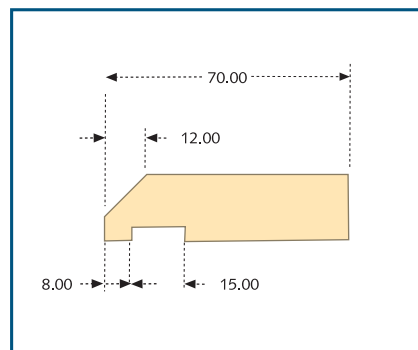
Moulded



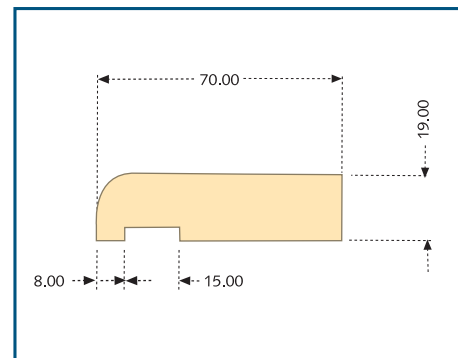
Pencil Round



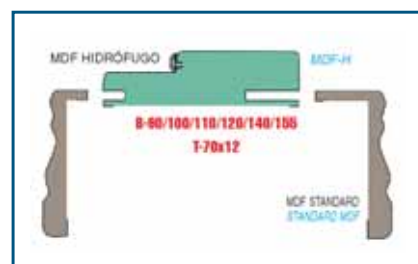
Splayed



Bullnose



Batex



Batex

